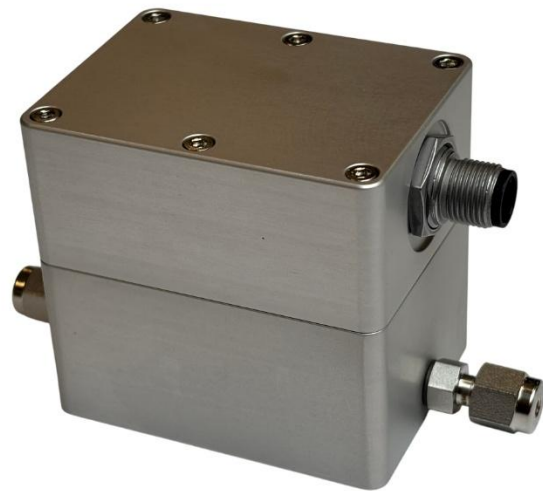


## Thermal Conductivity Gas Sensor

The XEN-5420 series are the next generation gas sensors with a wide application in industry where it is desirable to analyse binary gas mixtures. The sensor is based on the measurement of the thermal conductivity of the ambient gas, using the proven thermal conductivity sensor XEN-3880. Applications include hydrogen and helium gas experimentation and binary gas composition measurement.



### Features

- Long-term stable analysis of gases in binary and quasi-binary mixtures
- Fast response and data update rate
- High sensitivity and resolution
- Long lifetime and low maintenance
- Flow effects compensating design
- Temperature and humidity corrected output
- Allows user zero and gain calibration
- User configurable output calibration curves
- LabView read-out and programming software
- Read-out via CAN bus
- RoHS compliant
- CE and FCC certified

### Technical Specification

Preliminary Specifications at 23 °C, 101 kPa, 50 %RH

#### Mechanical

enclosure	70 x 52 x 66
weight	550 g
mounting	4 x M5

#### Environmental

temperature range	-20 to + 70 °C
humidity range	0 to 95 %RH (non condensing)
pressure range	0.5 – 10 bar
Max flow	TBD
Flow at calibration	1000 mln/min
Min flow	0 mln/min

#### Electrical

supply Voltage	9 - 24 VDC
power consumption	200 mW
maximum cable length	200 m
Connector	M12 - 5pin

### Applications

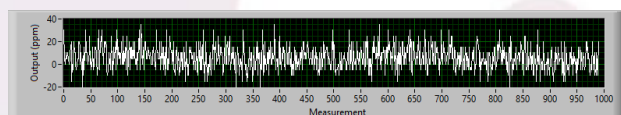
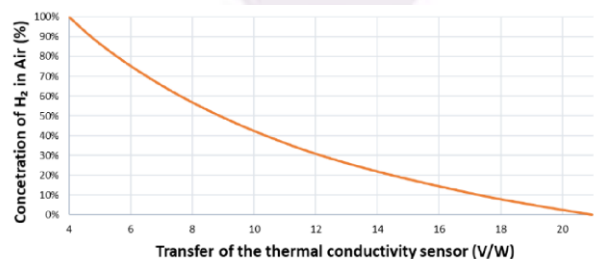
Monitoring of hydrogen, helium, CO<sub>2</sub>, argon, nitrogen and methane gas mixtures in medical, R&D and industrial environments.

### Principle of operation

The XEN-5420 determines the gas composition by measuring the temperature elevation of a micromachined heater element. For each binary gas mixture the ratio of temperature increase to heating power is dependent on the mix ratio. For enhanced accuracy, the correction is made for ambient temperature and humidity.

### Typical Output

The output of the XEN-5420 primarily consists of timestamped information about thermal conductivity transfer, temperature and humidity of the ambient gas. The gas mixture concentration is calculated using the compensated transfer of the thermal conductivity sensor and the user selectable calibration curve for the relevant gas mixture.



**Performance**

Preliminary Specifications at 23 °C, 101 kPa, 50 %RH

**General**

sensitivity for traces of H <sub>2</sub>	-2 %/%
sensitivity for traces of He	-1 %/%
sensitivity for traces of CO <sub>2</sub>	+0.3 %/%
inaccuracy H <sub>2</sub> and He	1 %FS
short term drift	< 100 ppm
long term zero drift	0.2 %/year
noise H <sub>2</sub> mode	Typical < 50 ppm
noise He mode	Typical < 75 ppm
range	

**Operational speed**

system start up time	0.3 s
t <sub>90</sub> response time	< 0.2 s
t <sub>10</sub> recovery time	< 0.2 s
t <sub>63</sub> response time RH	4 s
sensor	
data update rate	300 ms

**Ordering options**

1/8 inch pipe fittings	<input type="radio"/>
4 mm hose fittings	<input type="radio"/>
Glued fittings	<input type="radio"/>
Test report 0-100% H <sub>2</sub> in N <sub>2</sub>	<input type="radio"/>
Test report 0-100% He in N <sub>2</sub>	<input type="radio"/>
Test report other	<input type="radio"/>
Gain calibration 100%	<input type="radio"/>
Gain calibration other	<input type="radio"/>

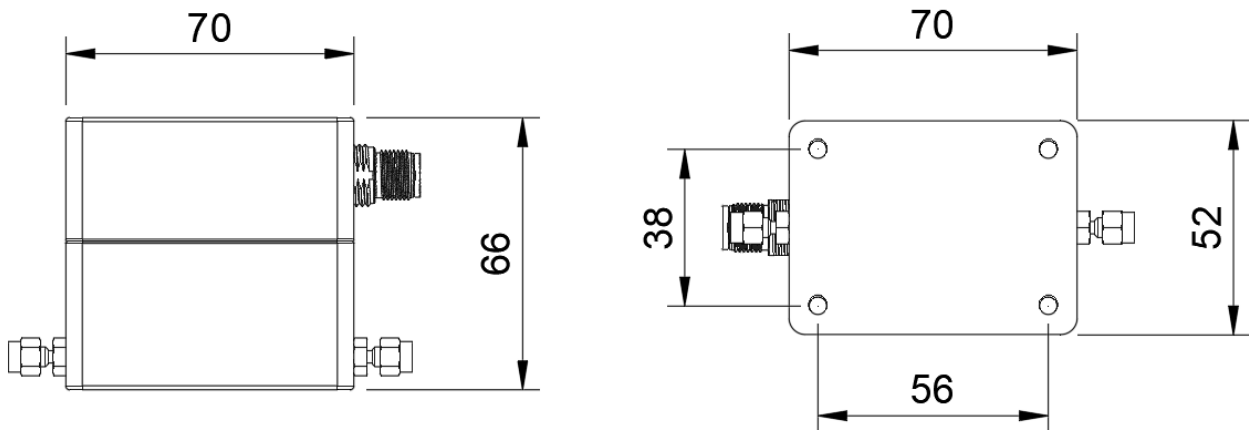
**Selectivity**

The thermal conductivity sensor is non-selective in that it will give an output in the presence of any gas having a thermal conductivity different than air. Measurement of hydrogen or helium in air or nitrogen is particularly attractive, due to the fact that the thermal conductivities of hydrogen and helium are very different from air and nitrogen.

**Calibration**

The XEN-5420 offers the possibility to perform a zero and gain calibration. This will position the begin point and the end point of the calibration curve at the right value, minimizing errors. The gain calibration can be performed at 1%, 5%, 10%, 30%, 50% and 100%. In addition, the user can capture their own calibration curve for a specific gas mixture and upload it in to the device.

**Outline drawing**



Whilst RS Product Solutions has taken care to ensure the accuracy of the information contained herein it accepts no responsibility for the consequences of any use thereof and also reserves the right to change the specifications of goods without notice. RS Product Solutions accepts no liability beyond set out in its standard conditions of sale in respect of infringement of third party patents arising from the use of RS Product Solutions products in accordance with information contained herein.